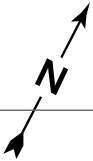


# BOSTON COLLEGE

## Chestnut Hill Campus

### KEY

- RESIDENCE HALLS
- ACADEMIC/ADMINISTRATIVE
- LIBRARY
- RECREATION/DINING
- PARKING GARAGE
- PUBLIC PARKING
- BUS STOP
- BLUE LIGHT EMERGENCY PHONE
- WHEELCHAIR ACCESSIBLE PATHS
- ACCESSIBLE ENTRANCE
- ACCESSIBLE PARKING SPACE
- ELEVATOR ACCESS



1

2

3

4

A

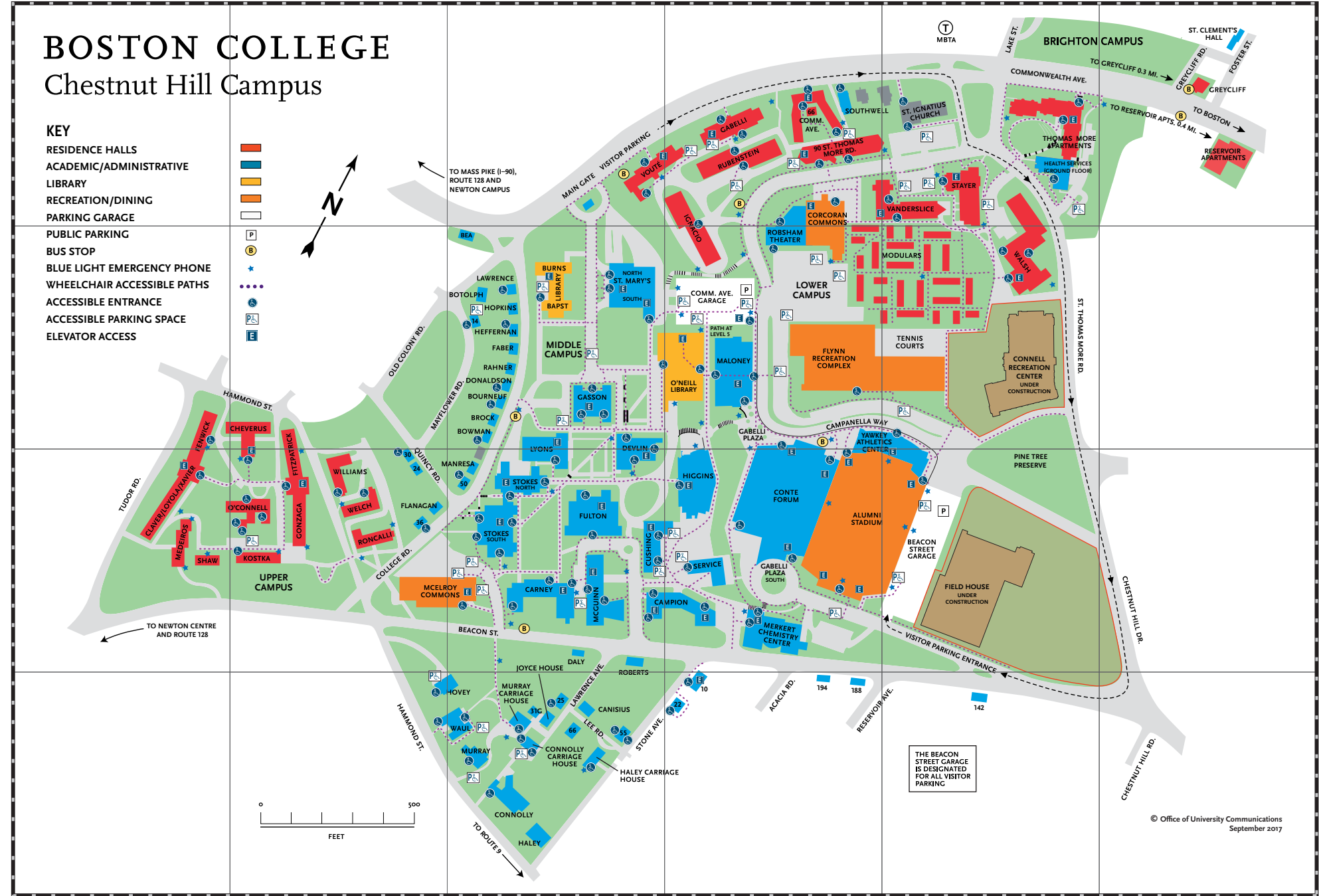
B

C

D

E

F



THE BEACON STREET GARAGE IS DESIGNATED FOR ALL VISITOR PARKING